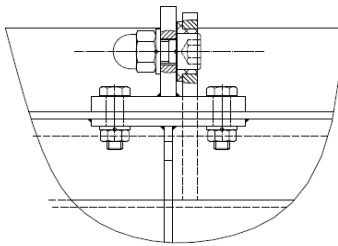
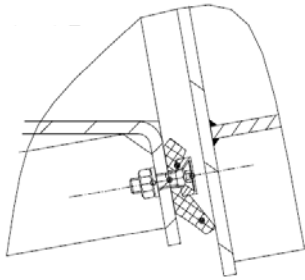




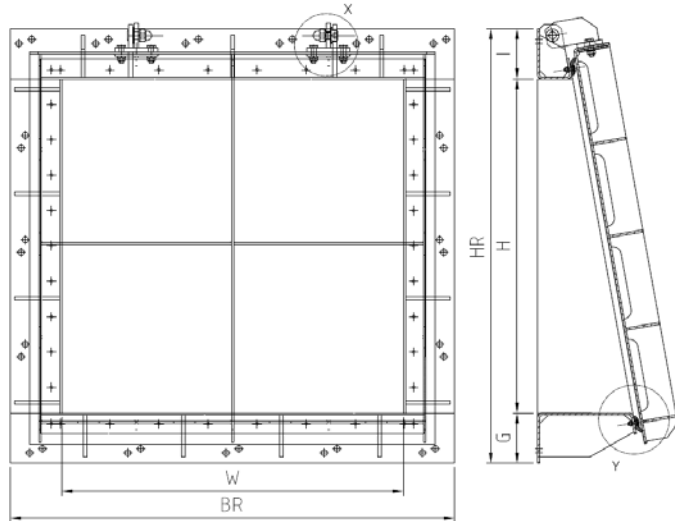
Detail X



Detail Y



Flap Valve with neck and plain flap, for wall bolting
W x H 200 x 200 to 2000 x 2000



MATERIALS OF CONSTRUCTION

Body	Flap	Seal	Connection parts
SS 304 (EN1.4301)	SS 316Ti (EN1.4571)	NBR or EPDM	S.S. A4
SS 316Ti (EN1.4571)	SS 304 (EN1.4301)	NBR or EPDM	S.S. A4

* other material combinations on request.

ORDER DATA

Materials**	Dimension**
Frame:	Width W x H: mm
Flap:	Width BR x HR: mm
Sealing:	Working pressure: bar
Seal retainer:	A4
Connection parts :	A4
	Width I: 100mm
	Width G: 100mm
	PN 0,6 bar

Penstocks (UK) Ltd
Unit 6 Alan Bray Close
Hinckley
Leicestershire
United Kingdom
LE10 3BP

Tel: +44 1455 636060

www.penstocksuk.com

Email: sales@penstocksuk.com